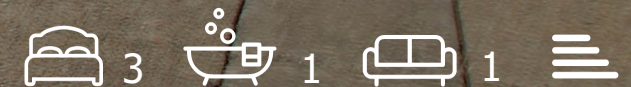




14 Eastergate Close

Worthing, BN12 5DH

Guide price £600,000



## 14 Eastergate Close

Worthing, BN12 5DH

OPEN HOUSE SATURDAY 9TH APRIL -  
PLEASE CALL TO ARRANGE A TIME  
SLOT.

James & James Estate Agents are  
delighted to bring to the market this  
beautifully presented THREE DOUBLE  
BEDROOM DETACHED BUNGALOW  
situated in a tucked away cul de sac on  
the Goring/Ferring border.

In brief, the accommodation comprises;  
entrance porch, hall, spacious South  
facing lounge, three double bedrooms,  
bathroom, separate WC and kitchen  
breakfast room. Externally there are  
well maintained front and rear gardens,  
private drive for several vehicles and a  
garage.

Located in Eastergate Close, the  
property is perfectly positioned close to  
both the Aldsworth Shopping Parade  
and Ferring Village shops. Mainline rail  
stations are just a short distance away  
with good access to bus routes.

In our opinion viewing is essential to  
appreciate the excellent condition and  
quiet location of this sought after  
property.

Entrance Porch

Hall

Lounge  
15' x 13'5 (4.57m x 4.09m)

Kitchen Breakfast Room  
14'2 x 8'9 (4.32m x 2.67m)





Bedroom One  
13'7 x 12'11 (4.14m x 3.94m)

Bedroom Two  
12'9 x 10'2 (3.89m x 3.10m)

Bedroom Three  
9'11 x 8'10 (3.02m x 2.69m)

Bath/Shower Room

Cloakroom

Outside

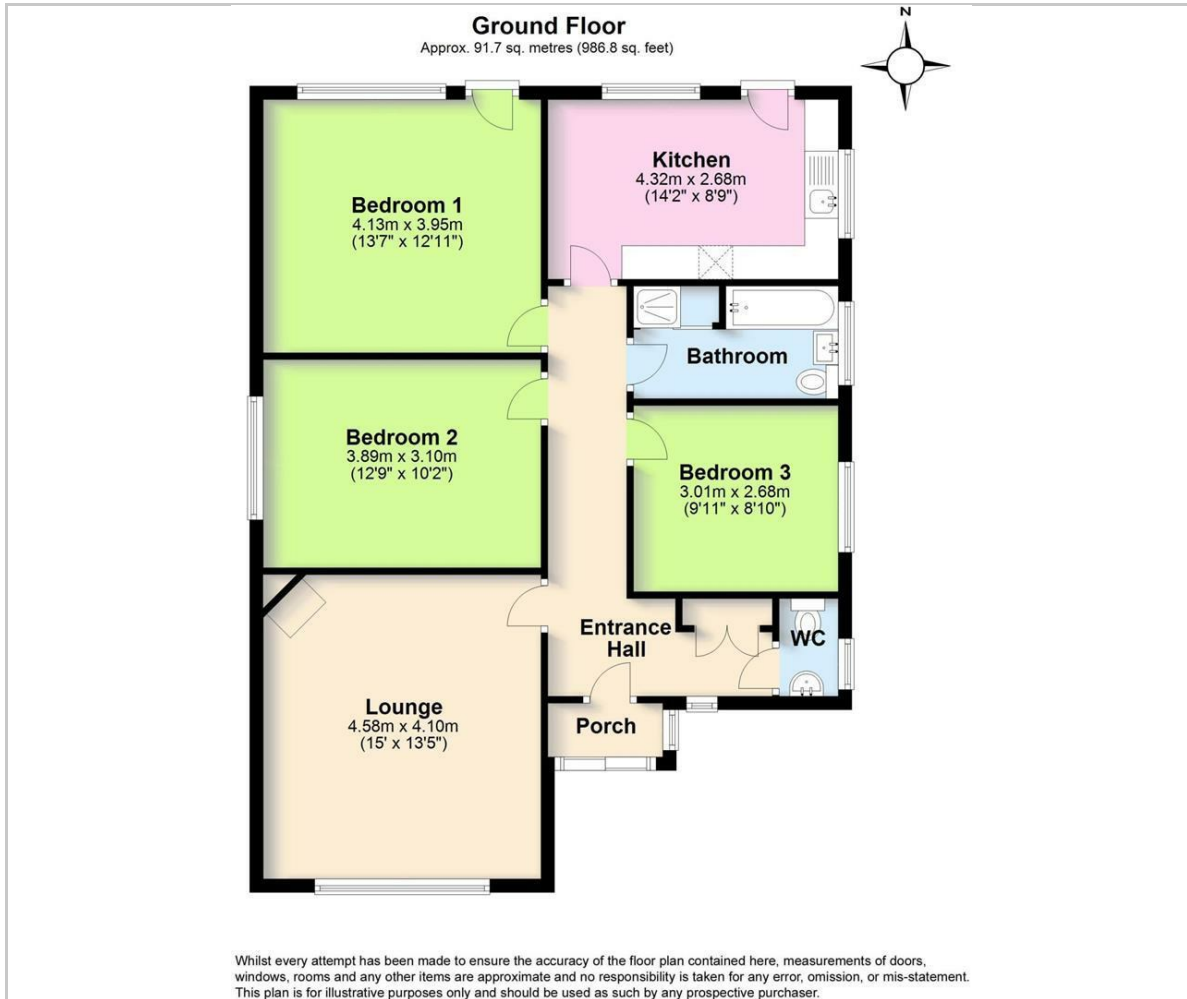
Front Garden

Rear Garden

Private Drive

Garage

## Floor Plan



## Viewing

Please contact our Worthing Office on 01903 958770 if you wish to arrange a viewing appointment for this property or require further information.

These particulars, whilst believed to be accurate are set out as a general outline only for guidance and do not constitute any part of an offer or contract. Intending purchasers should not rely on them as statements of representation of fact, but must satisfy themselves by inspection or otherwise as to their accuracy. No person in this firm's employment has the authority to make or give any representation or warranty in respect of the property.

## Area Map



## Energy Efficiency Graph

